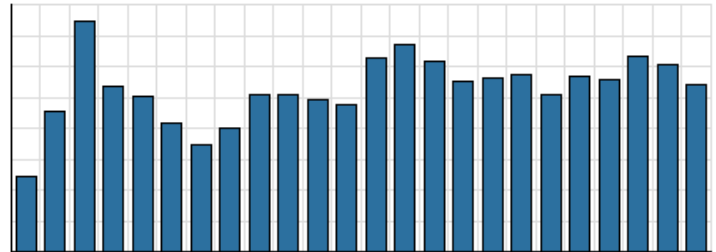


**Monthly Stats Brief Narrative**

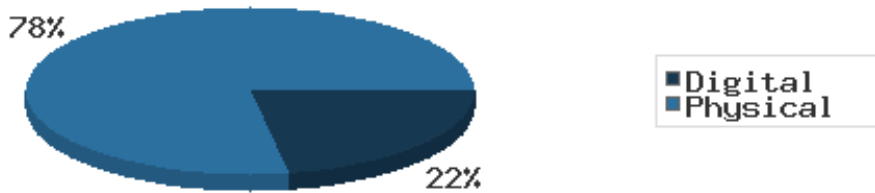
Through May 2022, the number of patrons entering our buildings greatly increased system-wide compared to this same time year-to-date the previous year. Combined physical and digital use of library materials increased year-to-date compared to 2021. About 11% of our registered cardholders checked out a physical item this past month, while about 4% of registered cardholders checked out a digital item.

**District Total Checkouts Over 24 Months**



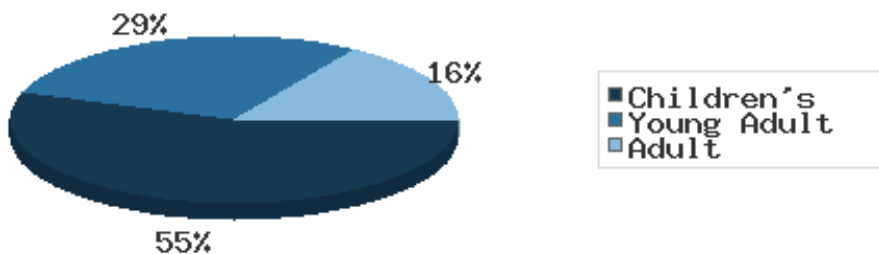
Digital usage has comprised about 22% of total materials use year-to-date through May 2022, and digital usage slightly decreased from this time in 2021.

**Digital vs. Physical Circulation YTD**



In May 2022, BDL patrons saved \$89,805.19 by checking out 8,101 physical items from the library. Our programming for all ages and our digital services further increase the library's value to the community, bringing the total estimated value to \$115,899.63.

**Programs Offered in 2022 YTD**



Compared to this time year-to-date 2021, the number of programs BDL offered has greatly increased. Attendance at programs somewhat decreased over this same period.

See the full statistical report, starting on the next page, for details and more graphs. The most up-to-date stats are always available online and interactive at <https://www.BranchDistrictLibrary.org/stats>.

## Attendance

May 2022

	BDL Monthly Total	BDL YTD	BDL Year End (Year-over-Year Change)				
			2021	2020	2019	2018	2017
<b>Attendance</b>	8,803	37,556 (+83%)	76,553 (+21%)	63,336 (-66%)	183,677 (-4%)	191,866 (-1%)	193,922 (-4%)
<b>Curbside Service Uses (Tracking since 2020)</b>	17	70	14	0	0	0	0
<b>Hours Open</b>	1,010.00	4,686.50 (+19%)	10,569.00 (+48%)	7,132.50 (-37%)	11,250.25 (-9%)	12,387.00 (+14%)	10,869.15 (0%)
<b>Number of Hours Scheduled Open Each Week (Tracking Since 1/2018)</b>	239.00		239.00 (+1%)	237.00 (-2%)	241.00 (-2%)	245.00	0.00

## Patrons

May 2022

	BDL Monthly Total	BDL YTD	BDL Year End (Year-over-Year Change)				
			2021	2020	2019	2018	2017
<b>Population in our Service Area (Tracking Since 2018)</b>	46,464	46,163 (avg) (+2%)	44,996 (avg) (+0%)	44,931 (avg) (0%)	45,093 (avg) (0%)	45,113 (avg)	0 (avg)
<b>Library Card Holders</b>	14,309	17,715 (avg) (-20%)	22,337 (avg) (+5%)	21,365 (avg) (+4%)	20,493 (avg) (-4%)	21,350 (avg) (-16%)	25,346 (avg) (+3%)
<b>Patrons Who Checked Out a Physical Item</b>	1,604	1,604 (avg) (+41%)	1,359 (avg) (+23%)	1,102 (avg) (-48%)	2,136 (avg) (-2%)	2,180 (avg) (-5%)	2,305 (avg) (-1%)
<b>New Library Card Holders Added</b>	43	320 (+96%)	732 (-44%)	1,304 (+111%)	618 (-39%)	1,021 (+21%)	844 (-15%)
<b>In-House Holds Filled for Our Library Card Holders</b>	725	4,458 (-12%)	10,696 (+13%)	9,467 (-10%)	10,527 (-4%)	10,987 (-6%)	11,650 (+12%)
<b>Active Hoopla Users</b>	318	297 (avg) (-3%)	291 (avg) (-10%)	322 (avg) (+11%)	290 (avg) (+14%)	255 (avg) (+50%)	170 (avg) (+92%)
<b>Active OverDrive Users</b>	243	248 (avg) (+9%)	223 (avg) (-5%)	234 (avg) (+10%)	213 (avg) (+18%)	180 (avg) (+27%)	143 (avg) (-1%)

## Physical Collection

Tracking Item-Type Breakdown Since 8/2017

May 2022

	BDL Monthly Total	BDL YTD	BDL Year End (Year-over-Year Change)				
			2021	2020	2019	2018	2017
<b>Physical Books and All other Print Materials in the Catalog</b>	92,006		91,417 (+0%)	91,278 (-8%)	98,689 (-2%)	100,253 (0%)	100,293
<b>Physical Audiobooks in the Catalog</b>	1,994		1,875 (-4%)	1,949 (+9%)	1,783 (-5%)	1,881 (+2%)	1,852
<b>Physical Video Materials in the Catalog</b>	11,934		11,646 (+3%)	11,352 (-1%)	11,460 (+8%)	10,579 (+1%)	10,519
<b>Physical Music Recordings in the Catalog</b>	42		42 (-76%)	178 (+12%)	159 (-53%)	337 (-2%)	345
<b>TOTAL Physical Items in the Catalog</b>	<b>105,976</b>		<b>104,980 (0%)</b>	<b>105,257 (-6%)</b>	<b>112,053 (-1%)</b>	<b>113,050 (+0%)</b>	<b>113,009 (-11%)</b>

## Digital Collection

Tracking Since 8/2017

May 2022

	BDL Monthly Total	BDL YTD	BDL Year End (Year-over-Year Change)				
			2021	2020	2019	2018	2017
Ebooks in All Digital Collections	684,408		648,146 (+35%)	480,691 (+30%)	370,666 (+21%)	306,595 (+33%)	230,178
Audiobooks in All Digital Collections	173,042		162,946 (+26%)	128,892 (+50%)	86,004 (+19%)	71,995 (+36%)	52,833
Video Materials in All Digital Collections	24,068		22,520 (+27%)	17,791 (+9%)	16,267 (+14%)	14,229 (-10%)	15,767
Music Recordings in All Digital Collections	308,839		21,347 (-92%)	273,294 (+1%)	271,614 (+13%)	239,705 (-14%)	280,259
Periodicals in All Digital Collections	4,117		3,881 (+6%)	3,668	0	0	0
<b>TOTAL of All Digital Collections</b>	<b>1,194,474</b>		<b>858,840 (-5%)</b>	<b>904,336 (+21%)</b>	<b>744,551 (+18%)</b>	<b>632,524 (+9%)</b>	<b>579,037</b>

## Total Collection

Tracking Since 8/2017

May 2022

	BDL Monthly Total	BDL YTD	BDL Year End (Year-over-Year Change)				
			2021	2020	2019	2018	2017
Combined Physical Items	105,976		104,980 (0%)	105,257 (-6%)	112,053 (-1%)	113,050 (+0%)	113,009 (-11%)
Combined Digital Collections	1,194,474		858,840 (-5%)	904,336 (+21%)	744,551 (+18%)	632,524 (+9%)	579,037
<b>TOTAL of all Collections</b>	<b>1,296,333</b>		<b>959,939 (-5%)</b>	<b>1,009,593 (+18%)</b>	<b>856,604 (+15%)</b>	<b>745,574 (+8%)</b>	<b>692,046 (+447%)</b>

## Use of Physical Items

May 2022

	BDL Monthly Total	BDL YTD	BDL Year End (Year-over-Year Change)				
			2021	2020	2019	2018	2017
Checkouts of Cataloged Items	5,875	32,560 (+38%)	68,460 (+31%)	52,227 (-53%)	110,285 (-3%)	113,128 (-6%)	120,916 (+2%)
Renewals of Cataloged Items	835	4,481 (+32%)	8,639 (+20%)	7,181 (-47%)	13,490 (-1%)	13,607 (-8%)	14,804 (-4%)
Items Used in the Library But Not Checked Out	368	2,114 (+58%)	2,350 (-63%)	6,404 (+54%)	4,166 (+49%)	2,803 (-8%)	3,050 (+126%)
Checkouts of Uncataloged Items	56	424 (+9%)	1,505 (+50%)	1,001 (-70%)	3,294 (-16%)	3,904 (+38%)	2,839 (-38%)
Requests from BDL Patrons for Items at Other MeLCat Libraries, Actually Fulfilled	483	2,776 (-7%)	6,981 (+52%)	4,599 (-53%)	9,873 (+1%)	9,777 (+20%)	8,169 (+15%)
Requests from Other MeLCat Libraries for Items at BDL, Actually Fulfilled	484	2,649 (+17%)	5,712 (+80%)	3,175 (-58%)	7,582 (-23%)	9,810 (+25%)	7,867 (+11%)
<b>TOTAL Use of Physical Items</b>	<b>8,101</b>	<b>45,004 (+33%)</b>	<b>93,647 (+26%)</b>	<b>74,587 (-50%)</b>	<b>148,690 (-3%)</b>	<b>153,029 (-3%)</b>	<b>157,645 (+2%)</b>

## Use of Digital Resources

May 2022

	BDL Monthly Total	BDL YTD	BDL Year End (Year-over-Year Change)				
			2021	2020	2019	2018	2017
OverDrive Checkouts	1,097	5,722 (+5%)	13,294 (+2%)	13,051 (+21%)	10,822 (+14%)	9,501 (+21%)	7,823 (+4%)
Hoopla Checkouts	1,206	5,487 (+1%)	12,507 (-8%)	13,604 (+9%)	12,530 (-2%)	12,796 (+20%)	10,669 (+96%)
All Other Digital Services	394	1,848 (-27%)	10,131 (+42%)	7,140 (-33%)	10,604 (+11%)	9,572 (-72%)	34,047 (-46%)
<b>TOTAL Use of Digital Resources</b>	<b>2,697</b>	<b>13,057 (-5%)</b>	<b>36,284 (+4%)</b>	<b>34,861 (+3%)</b>	<b>33,956 (+7%)</b>	<b>31,869 (-39%)</b>	<b>52,539 (-31%)</b>

## Total Item Usage

May 2022

	BDL Monthly Total	BDL YTD	BDL Year End (Year-over-Year Change)				
			2021	2020	2019	2018	2017
Combined Checkouts of Physical Items	8,101	45,004 (+33%)	93,647 (+26%)	74,587 (-50%)	148,690 (-3%)	153,029 (-3%)	157,645 (+2%)
Combined Use of Digital Resources	2,697	13,057 (-5%)	36,284 (+4%)	34,861 (+3%)	33,956 (+7%)	31,869 (-39%)	52,539 (-31%)
<b>TOTAL Uses of All BDL Items</b>	<b>10,798</b>	<b>58,061 (+22%)</b>	<b>129,931 (+19%)</b>	<b>109,448 (-40%)</b>	<b>182,646 (-1%)</b>	<b>184,898 (-12%)</b>	<b>210,184 (-9%)</b>

## Cataloging

May 2022

	BDL Monthly Total	BDL YTD	BDL Year End (Year-over-Year Change)				
			2021	2020	2019	2018	2017
Physical Items Added to the Catalog	977	4,168 (-21%)	11,665 (+17%)	9,938 (+2%)	9,719 (-12%)	11,056 (+0%)	11,009 (-1%)
Physical Items Deleted from the Catalog	649	3,260 (-58%)	16,482 (-3%)	17,003 (+58%)	10,769 (-2%)	10,941 (-55%)	24,366 (+53%)

## Reference Questions

May 2022

	BDL Monthly Total	BDL YTD	BDL Year End (Year-over-Year Change)				
			2021	2020	2019	2018	2017
General Reference Questions in Person	764	3,801 (+40%)	8,431 (+94%)	4,347 (-50%)	8,748 (+32%)	6,641 (-12%)	7,537 (+20%)
Questions via Telephone Calls	435	2,360 (-10%)	5,765 (+26%)	4,559 (+11%)	4,111 (+6%)	3,866 (-24%)	5,079 (+10%)
Reference Questions Delivered Online	24	100 (-36%)	275 (+13%)	243 (-14%)	281 (+85%)	152 (-35%)	233 (-23%)
In-Person Questions on Computer or Internet Use	292	1,498 (+28%)	3,675 (+33%)	2,767 (-63%)	7,505 (+6%)	7,068 (-3%)	7,285 (+11%)
In-Person Questions about Our Online Databases	0	27 (-57%)	142 (+33%)	107 (-69%)	349 (-15%)	409 (+13%)	363 (+114%)
In-Person Tax Form Questions	3	195 (-14%)	233 (-19%)	286 (-12%)	326 (-37%)	518 (+5%)	493 (+4%)
<b>TOTAL of All Reference Questions</b>	<b>1,518</b>	<b>7,981 (+15%)</b>	<b>18,521 (+50%)</b>	<b>12,309 (-42%)</b>	<b>21,320 (+14%)</b>	<b>18,654 (-11%)</b>	<b>20,990 (+14%)</b>

## Notary Services

Began 9/2017

May 2022

	BDL Monthly Total	BDL YTD	BDL Year End (Year-over-Year Change)				
			2021	2020	2019	2018	2017
Patrons Who Used our Free Notary Services	11	44 (+300%)	69 (+50%)	46 (-52%)	95 (+44%)	66 (+371%)	14
Documents Notarized	12	59 (+321%)	112 (+107%)	54 (-56%)	124 (+85%)	67 (+253%)	19

## MeLCat

May 2022

	BDL Monthly Total	BDL YTD	BDL Year End (Year-over-Year Change)				
			2021	2020	2019	2018	2017
Requests from BDL Patrons for Items at Other MeLCat Libraries	489	2,892 (-8%)	7,375 (+47%)	5,026 (-52%)	10,538 (+1%)	10,462 (+20%)	8,699 (+14%)
Requests from BDL Patrons for Items at Other MeLCat Libraries, Actually Fulfilled	483	2,776 (-7%)	6,981 (+52%)	4,599 (-53%)	9,873 (+1%)	9,777 (+20%)	8,169 (+15%)
Requests from Other MeLCat Libraries for Items at BDL	486	2,643 (+4%)	6,067 (+49%)	4,067 (-52%)	8,405 (-18%)	10,296 (+29%)	7,994 (+13%)
Requests from Other MeLCat Libraries for Items at BDL, Actually Fulfilled	484	2,649 (+17%)	5,712 (+80%)	3,175 (-58%)	7,582 (-23%)	9,810 (+25%)	7,867 (+11%)

## Programs Held

May 2022

	BDL Monthly Total	BDL YTD	BDL Year End (Year-over-Year Change)				
			2021	2020	2019	2018	2017
Early Childhood Literacy Programs Held (Tracking since 2021)	14	98 (+139%)	116	0	0	0	0
Juvenile Programs Held	60	278 (+196%)	290 (-47%)	551 (-31%)	804 (+10%)	730 (+1%)	720 (+19%)
Young Adult Programs Held	28	144 (+279%)	131 (-5%)	138 (-55%)	304 (-10%)	338 (+41%)	239 (+47%)
Adult Programs Held	9	69 (+23%)	114 (-56%)	257 (+54%)	167 (+23%)	136 (-7%)	146 (-34%)
All-Ages Programs Held (Tracking since 2021)	0	23 (-21%)	80	0	0	0	0
Early Childhood Literacy Summer Reading Programs Held (Tracking since 2021)	0	0	9	0	0	0	0
Juvenile Summer Reading Events Held	0	0	96	0	173 (+52%)	114 (+20%)	95 (+7%)
Young Adult Summer Reading Events Held	0	0	25	0	61 (+24%)	49 (-14%)	57 (+97%)
Adult Summer Reading Events Held	0	0	27	0	17 (+467%)	3	0
All-Ages Summer Reading Programs Held (Tracking since 2021)	0	0	26	0	0	0	0
Computer Classes Held	4	11 (+1,000%)	1	1 (-99%)	81 (+305%)	20 (-9%)	22 (+57%)
<b>TOTAL of All Programs</b>	<b>115</b>	<b>623 (+141%)</b>	<b>1,636 (+73%)</b>	<b>947 (-41%)</b>	<b>1,607 (+16%)</b>	<b>1,390 (+9%)</b>	<b>1,279 (+14%)</b>

## Program Attendance

May 2022

	BDL Monthly Total	BDL YTD	BDL Year End (Year-over-Year Change)				
			2021	2020	2019	2018	2017
Attendees at Early Childhood Literacy Programs (Tracking since 2021)	155	651 (-30%)	1,389	0	0	0	0
Attendees at Juvenile Programs	818	2,963 (+78%)	4,270 (-83%)	25,317 (+73%)	14,654 (-7%)	15,725 (+2%)	15,351 (+48%)
Attendees at Young Adult Programs	151	669 (+1119%)	817 (-75%)	3,204 (+29%)	2,489 (-23%)	3,218 (-15%)	3,806 (+276%)
Attendees at Adult Programs	33	550 (-64%)	1,971 (-88%)	16,263 (+519%)	2,627 (+33%)	1,970 (0%)	1,979 (-3%)
Attendees at All-Ages Programs (Tracking since 2021)	0	317 (-72%)	4,547	0	0	0	0
Attendees at Early Childhood Literacy Summer Reading Programs (Tracking since 2021)	0	0	146	0	0	0	0
Attendees at Juvenile Summer Reading Events	0	0	1,798	0	4,186 (+8%)	3,864 (+24%)	3,116 (-20%)
Attendees at Young Adult Summer Reading Events	0	0	181	0	279 (-16%)	333 (-50%)	671 (+127%)
Attendees at Adult Summer Reading Events	0	0	179	0	310 (+265%)	85	0
Attendees at All-Ages Summer Programs (Tracking since 2021)	0	0	730	0	0	0	0
Attendees at Computer Classes	4	12 (+1,100%)	1	0	26 (+30%)	20 (-5%)	21 (+75%)
<b>TOTAL of All Program Attendance</b>	<b>1,161</b>	<b>5,162 (-7%)</b>	<b>16,029 (-64%)</b>	<b>44,784 (+82%)</b>	<b>24,571 (-3%)</b>	<b>25,215 (+1%)</b>	<b>24,944 (+41%)</b>

## Summer Reading Overview

May 2022

	BDL Monthly Total	BDL YTD	BDL Year End (Year-over-Year Change)				
			2021	2020	2019	2018	2017
Juveniles Signed Up for Summer Reading Program	0	0	407 (+347%)	91 (-87%)	711 (-5%)	747 (-35%)	1,153 (+19%)
Young Adults Signed up for Summer Reading Program	0	0	77 (+166%)	29 (-78%)	134 (-65%)	378 (-2%)	385 (+241%)
Adults Signed Up for Summer Reading Program	0	0	122 (+270%)	33 (-79%)	159 (-36%)	248 (+112%)	117 (+36%)
Juveniles who Completed Summer Reading Program	0	0	220 (+142%)	91 (-76%)	385 (+48%)	260 (-50%)	518 (+13%)
Young Adults who Completed Summer Reading Program	0	0	38 (+31%)	29 (-63%)	79 (-41%)	135 (-50%)	268 (+332%)
Adults who Completed Summer Reading Program	0	0	30 (-9%)	33 (-72%)	118 (-28%)	165 (+72%)	96 (+60%)
Juvenile Summer Reading Events Held	0	0	96	0	173 (+52%)	114 (+20%)	95 (+7%)
Young Adult Summer Reading Events Held	0	0	25	0	61 (+24%)	49 (-14%)	57 (+97%)
Adult Summer Reading Events Held	0	0	27	0	17 (+467%)	3	0
Attendees at Juvenile Summer Reading Events	0	0	1,798	0	4,186 (+8%)	3,864 (+24%)	3,116 (-20%)
Attendees at Young Adult Summer Reading Events	0	0	181	0	279 (-16%)	333 (-50%)	671 (+127%)
Attendees at Adult Summer Reading Events	0	0	179	0	310 (+265%)	85	0

## Summer Reading Program Signups

May 2022

	BDL Monthly Total	BDL YTD	BDL Year End (Year-over-Year Change)				
			2021	2020	2019	2018	2017
Juveniles Signed Up for Summer Reading Program	0	0	407 (+347%)	91 (-87%)	711 (-5%)	747 (-35%)	1,153 (+19%)
Young Adults Signed up for Summer Reading Program	0	0	77 (+166%)	29 (-78%)	134 (-65%)	378 (-2%)	385 (+241%)
Adults Signed Up for Summer Reading Program	0	0	122 (+270%)	33 (-79%)	159 (-36%)	248 (+112%)	117 (+36%)
<b>TOTAL Summer Reading Program Signups</b>	<b>0</b>	<b>0</b>	<b>606 (+296%)</b>	<b>153 (-85%)</b>	<b>1,004 (-27%)</b>	<b>1,373 (-17%)</b>	<b>1,655 (+42%)</b>

## Summer Reading Program Completions

May 2022

	BDL Monthly Total	BDL YTD	BDL Year End (Year-over-Year Change)				
			2021	2020	2019	2018	2017
Juveniles who Completed Summer Reading Program	0	0	220 (+142%)	91 (-76%)	385 (+48%)	260 (-50%)	518 (+13%)
Young Adults who Completed Summer Reading Program	0	0	38 (+31%)	29 (-63%)	79 (-41%)	135 (-50%)	268 (+332%)
Adults who Completed Summer Reading Program	0	0	30 (-9%)	33 (-72%)	118 (-28%)	165 (+72%)	96 (+60%)
<b>TOTAL Summer Reading Program Completions</b>	<b>0</b>	<b>0</b>	<b>288 (+88%)</b>	<b>153 (-74%)</b>	<b>582 (+4%)</b>	<b>560 (-37%)</b>	<b>882 (+52%)</b>

## Library-Provided Computer Services

May 2022

	BDL Monthly Total	BDL YTD	BDL Year End (Year-over-Year Change)				
			2021	2020	2019	2018	2017
One-hour sessions on Library Wifi	28,868	125,067 (+2%)	290,877 (+2%)	284,892 (-40%)	474,750 (+2%)	465,219 (+9%)	425,714 (+4%)
Desktop, Laptop, and Tablet Computers Available for Public Use	92		92 (+5%)	88	88 (-1%)	89 (+22%)	73
Sessions on Library-Provided Computers	1,207	5,785 (+132%)	11,926 (+24%)	9,604 (-73%)	35,720 (-22%)	45,687 (+3%)	44,181 (+6%)
Hours Library-Provided Computers Used (Tracking Since 2018)	772.73	3,624.74 (+181%)	6,735.18 (+12%)	6,031.58 (-75%)	24,280.36 (-2%)	24,701.55	0.00
Desktop, Laptop, and Tablet Computers Available for Staff Use	54		55 (+6%)	52	52 (+4%)	50 (+22%)	41

## Website Stats

May 2022

	BDL Monthly Total	BDL YTD	BDL Year End (Year-over-Year Change)				
			2021	2020	2019	2018	2017
Monthly Website Sessions	3,987	18,571 (+6%)	46,481 (+12%)	41,586 (-28%)	58,161 (+28%)	45,594 (-38%)	73,326 (-2%)
Monthly Website Page Views	7,617	36,241 (-1%)	116,164 (+26%)	92,094 (-29%)	129,778 (+9%)	118,634 (-33%)	177,799 (-2%)

## Faxes, Prints, and Sales

May 2022

	BDL Monthly Total	BDL YTD	BDL Year End (Year-over-Year Change)				
			2021	2020	2019	2018	2017
Fax Pages Received	0	18 (-66%)	141 (-5%)	149 (-57%)	350 (-16%)	419 (+61%)	260 (+19%)
Fax Pages Sent	508	2,858 (+21%)	6,515 (+66%)	3,935 (-59%)	9,524 (+3%)	9,249 (+138%)	3,879 (+123%)
Free Prints for Job Seekers, Students, etc.	763	7,502 (+1,453%)	3,222 (+195%)	1,091 (-61%)	2,796 (-23%)	3,631 (+16%)	3,128 (+9%)
Black and White Patron Prints (Tracking Since 6/2016)	3,985	22,998 (+9%)	55,206 (+66%)	33,177 (-56%)	75,818 (-6%)	81,016 (+7%)	75,606 (+113%)
Color Patron Prints (Tracking Since 6/2016)	887	3,603 (+24%)	9,731 (+107%)	4,709 (-58%)	11,299 (-8%)	12,285 (+20%)	10,253 (+154%)
Flash Drives Sold (Tracking Since 6/2016)	0	14 (+367%)	16 (-11%)	18 (-51%)	37 (-10%)	41 (-27%)	56 (+4%)
Earbuds Sold (Tracking Since 6/2016)	6	62 (+226%)	122 (-7%)	131 (-72%)	462 (-14%)	538 (+29%)	416 (+151%)

## Fines and Fees

Overdue Fines Dropped in 2017

May 2022

	BDL Monthly Total	BDL YTD	BDL Year End (Year-over-Year Change)				
			2021	2020	2019	2018	2017
Fines and Fees Payments Received	\$ 127.07	\$ 771.94 (+19%)	\$ 1,409.59 (-18%)	\$ 1,717.01 (-44%)	\$ 3,092.62 (+28%)	\$ 2,412.73 (-68%)	\$ 7,628.31 (-24%)
Outstanding Fines and Fees	\$ 12,319.30		8,576.40 (-84%)	53,362.56 (-4%)	55,588.42 (0%)	55,850.27 (-34%)	84,232.33 (-63%)

## Debt Collections

Unique Management Services, Inc.  
Tracking Since 2014

May 2022

	BDL Monthly Total	BDL YTD	BDL Year End (Year-over-Year Change)				
			2021	2020	2019	2018	2017
Fine Payments as a Result of Collection Agency's Efforts	\$ 0.00	\$ 0.00	\$ 0.00	\$ 0.00	\$ 268.00 (-94%)	\$ 4,183.45 (+1,727%)	\$ 229.00 (-76%)
Library Materials Returned as a Result of Collection Agency's Efforts	\$ 0.00	\$ 0.00	\$ 0.00	\$ 0.00	\$ 0.00	\$ 462.00 (-48%)	\$ 888.95 (-33%)
What We Paid Collection Agency for Their Services	\$ 0.00	\$ 0.00	\$ 0.00	\$ 0.00	\$ 134.10 (-75%)	\$ 528.66 (-5%)	\$ 558.08 (-45%)



## Value to Our Service Area

Visit <https://www.BranchDistrictLibrary.org/value>  
to learn how we determine these numbers.

May 2022

	BDL Monthly Total	BDL YTD	BDL Year End (Year-over-Year Change)				
			2021	2020	2019	2018	2017
Value from Physical Item Checkouts	\$ 89,805.19	\$ 509,875.77 (+40%)	\$ 1,048,840.66 (+27%)	\$ 822,979.52 (-53%)	\$ 1,755,554.08 (-7%)	\$ 1,888,907.75 (-12%)	\$ 2,135,671.28 (+0%)
Value from Attending Programs (Tracking Since 1/2018)	\$ 8,127.00	\$ 36,008.00 (+31%)	\$ 78,390.00 (-38%)	\$ 126,690.00 (+7%)	\$ 118,485.00 (-6%)	\$ 125,795.00	\$ 0.00
Value from Fax Service (Tracking Since 1/2018)	\$ 508.00	\$ 2,579.00 (+7%)	\$ 6,534.00 (+61%)	\$ 4,056.00 (-60%)	\$ 10,205.00 (+6%)	\$ 9,668.00	\$ 0.00
Value from Free Prints (Tracking Since 1/2018)	\$ 114	\$ 982 (+1,303%)	\$ 443 (+173%)	\$ 163 (-61%)	\$ 419 (-23%)	\$ 545	\$ 0
Value from Notary Services (Tracking Since 1/2018)	\$ 55.00	\$ 210.00 (+282%)	\$ 320.00 (+42%)	\$ 225.00 (-53%)	\$ 475.00 (+44%)	\$ 330.00	\$ 0.00
Value from Digital Services (Tracking Since 1/2018)	\$ 13,485.00	\$ 65,285.00 (+19%)	\$ 145,136.00 (+5%)	\$ 138,316.00 (+2%)	\$ 135,824.00 (+7%)	\$ 127,476.00	\$ 0.00
Value from Using Library Computers (Tracking Since 1/2018)	\$ 2,318.19	\$ 10,874.22 (+181%)	\$ 20,205.54 (+12%)	\$ 18,094.74 (-75%)	\$ 72,841.08 (-2%)	\$ 74,104.66	\$ 0.00
Value from Using Library Wifi (Tracking Since 1/2018)	\$ 1,486.80	\$ 9,256.70 (+8%)	\$ 17,897.18 (-10%)	\$ 19,942.44 (-40%)	\$ 33,232.50 (+2%)	\$ 32,565.33	\$ 0.00
<b>TOTAL Value of Free Library Services</b>	<b>\$ 115,899.63</b>	<b>\$ 635,070.74 (+38%)</b>	<b>\$ 1,317,766.78 (+17%)</b>	<b>\$ 1,130,466.45 (-47%)</b>	<b>\$ 2,127,036.06 (-6%)</b>	<b>\$ 2,259,391.39 (+6%)</b>	<b>\$ 2,135,671.28 (+0%)</b>

## Materials Expenditures

Tracking since 2018

May 2022

	BDL Monthly Total	BDL YTD	BDL Year End (Year-over-Year Change)				
			2021	2020	2019	2018	2017
Amount Spent on Books	\$ 3,963.01	\$ 33,006.98 (-19%)	\$ 108,851.89 (+27%)	\$ 85,727.68 (+12%)	\$ 76,878.30 (-18%)	\$ 93,763.50	\$ 0.00
Amount Spent on Periodicals	\$ -972.89	\$ -625.17 (-211%)	\$ 5,051.01 (-6%)	\$ 5,390.61 (-5%)	\$ 5,663.99 (-20%)	\$ 7,085.59	\$ 0.00
Amount Spent on Audiovisual Materials	\$ 524.51	\$ 4,469.00 (-38%)	\$ 23,646.40 (+39%)	\$ 16,992.04 (+13%)	\$ 15,009.96 (-17%)	\$ 17,998.47	\$ 0.00
Amount Spent on Digital Resources	\$ 2,093.82	\$ 13,144.58 (-21%)	\$ 42,439.73 (+34%)	\$ 31,708.66 (+12%)	\$ 28,412.62 (-35%)	\$ 43,798.90	\$ 0.00
<b>TOTAL Spent on All Library Materials</b>	<b>\$ 5,608.45</b>	<b>\$ 49,995.39 (-24%)</b>	<b>\$ 179,989.03 (+29%)</b>	<b>\$ 139,818.99 (+11%)</b>	<b>\$ 125,964.87 (-23%)</b>	<b>\$ 162,646.46</b>	<b>\$ 0.00</b>

## Other Expenditures

Tracking since 2018

May 2022

	BDL Monthly Total	BDL YTD	BDL Year End (Year-over-Year Change)				
			2021	2020	2019	2018	2017
Total Materials Expenditures	\$ 5,608.45	\$ 49,995.39 (-24%)	\$ 179,989.03 (+29%)	\$ 139,818.99 (+11%)	\$ 125,964.87 (-23%)	\$ 162,646.46	\$ 0.00
Total Staff Expenditures	\$ 109,419.59	\$ 485,909.48 (+13%)	\$ 963,961.23 (+1%)	\$ 956,326.38 (-18%)	\$ 1,172,756.92 (-20%)	\$ 1,469,560.33	\$ 0.00
Expenditures in other categories	\$ 27,980.41	\$ 343,903.75 (+14%)	\$ 860,839.79 (+78%)	\$ 483,894.79 (+37%)	\$ 353,231.25 (-16%)	\$ 422,747.74	\$ 0.00
<b>TOTAL Expenditures in all Categories</b>	<b>\$ 137,400.00</b>	<b>\$ 817,832.08 (+6%)</b>	<b>\$ 1,865,487.82 (+3%)</b>	<b>\$ 1,819,492.24 (+1%)</b>	<b>\$ 1,797,240.67 (-13%)</b>	<b>\$ 2,054,954.53</b>	<b>\$ 0.00</b>

## Staffing

May 2022

	BDL Monthly Total	BDL YTD	BDL Year End (Year-over-Year Change)				
			2021	2020	2019	2018	2017
Total BDL Staff	37	36 (avg) (+3%)	35 (avg) (-3%)	36 (avg) (-3%)	37 (avg) (-8%)	40 (avg) (+5%)	37 (avg) (+9%)
BDL Staff with MLS Degree	5	5 (avg)	5 (avg)	5 (avg) (+25%)	5 (avg) (-33%)	6 (avg) (+20%)	5 (avg) (+150%)
Worked Full-Time Equivalents	23.57	23.58 (avg)	21.71 (avg) (-13%)	24.53 (avg) (-4%)	25.78 (avg) (-4%)	26.92 (avg) (+8%)	24.91 (avg) (+41%)
Hours of Specialized Training for Staff (Tracking Since 1/2019)	60	260 (-27%)	763 (-35%)	1,170 (+119%)	534	0	0
Hours Volunteers Worked at the Library (Tracking Since 1/2019)	18	144 (+112%)	128 (+228%)	39 (-96%)	1,065	0	0

## Outreach Services

Began 2018

May 2022

	BDL Monthly Total	BDL YTD	BDL Year End (Year-over-Year Change)				
			2021	2020	2019	2018	2017
Number of Patrons Served by Outreach Services	5	57 (-24%)	120 (+186%)	42 (-40%)	70 (-8%)	76 (+2,433%)	3
Number of Items Delivered to Outreach Patrons	17	210 (-35%)	548 (+126%)	242 (+10%)	220 (-64%)	606 (+2,231%)	26

## Coldwater Branch Heritage Room

Stats part of Coldwater Branch totals above; shown here for convenience.

May 2022

	Heritage Room	BDL YTD	BDL Year End (Year-over-Year Change)				
			2021	2020	2019	2018	2017
Heritage Room Attendance	27	158 (+365%)	202 (+92%)	105 (-78%)	484 (-34%)	736 (+12%)	658 (-7%)
In-Person Reference Questions	19	59 (+743%)	74 (-8%)	80 (-81%)	412 (-42%)	708 (+29%)	550 (+664%)
Reference Telephone Calls	10	47 (+31%)	115 (+92%)	60 (-74%)	232 (-16%)	277 (-36%)	433 (+15%)
Online Reference Questions	1	4 (-71%)	42 (+24%)	34 (-48%)	65 (+8%)	60 (-5%)	63 (-24%)

## Coldwater Branch Kids' Place

Stats part of Coldwater Branch totals above; shown here for convenience.

Tracking separately since April 2019.

May 2022

	Kids' Place	BDL YTD	BDL Year End (Year-over-Year Change)				
			2021	2020	2019	2018	2017
Kids' Place Attendance	677	3,248 (+323%)	4,445 (+86%)	2,385 (-75%)	9,710	0	0
In-Person Reference Questions	127	567 (+158%)	740 (+227%)	226 (-61%)	575	0	0
Reference Telephone Calls	12	76 (-14%)	214 (+37%)	156 (-30%)	224	0	0
Online Reference Questions	0	0	2	0	0	0	0

## Coldwater Branch Teen Space

Stats part of Coldwater Branch totals above; shown here for convenience.

Tracking separately since April 2019.

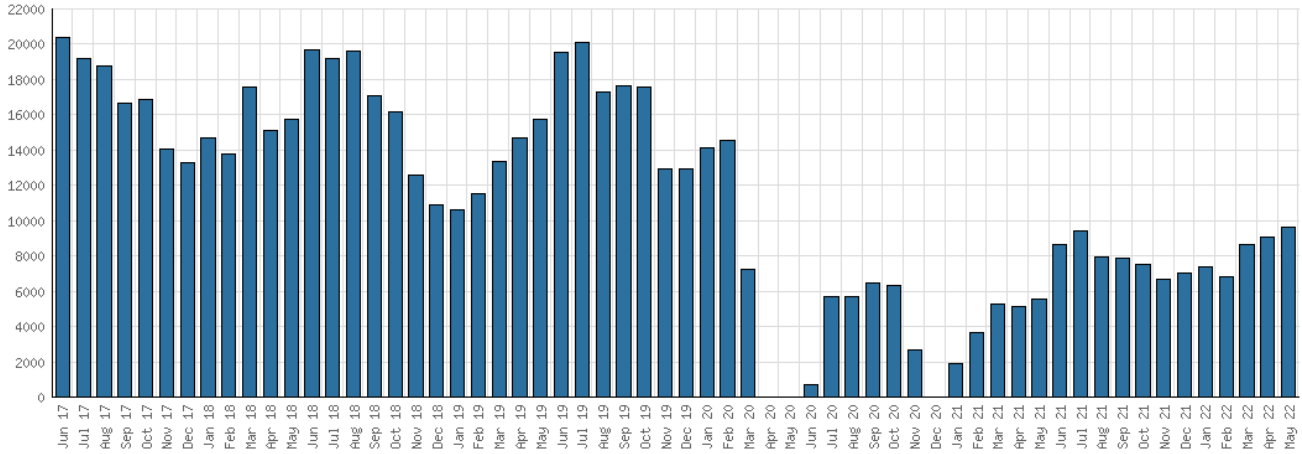
May 2022

	Teen Space	BDL YTD	BDL Year End (Year-over-Year Change)				
			2021	2020	2019	2018	2017
Teen Space Attendance	146	662 (+238%)	706 (-16%)	845 (-80%)	4,172	0	0
In-Person Reference Questions	8	36	13 (+225%)	4 (-96%)	93	0	0
Reference Telephone Calls	0	0	0	0	0	0	0
Online Reference Questions	0	0	0	0	0	0	0

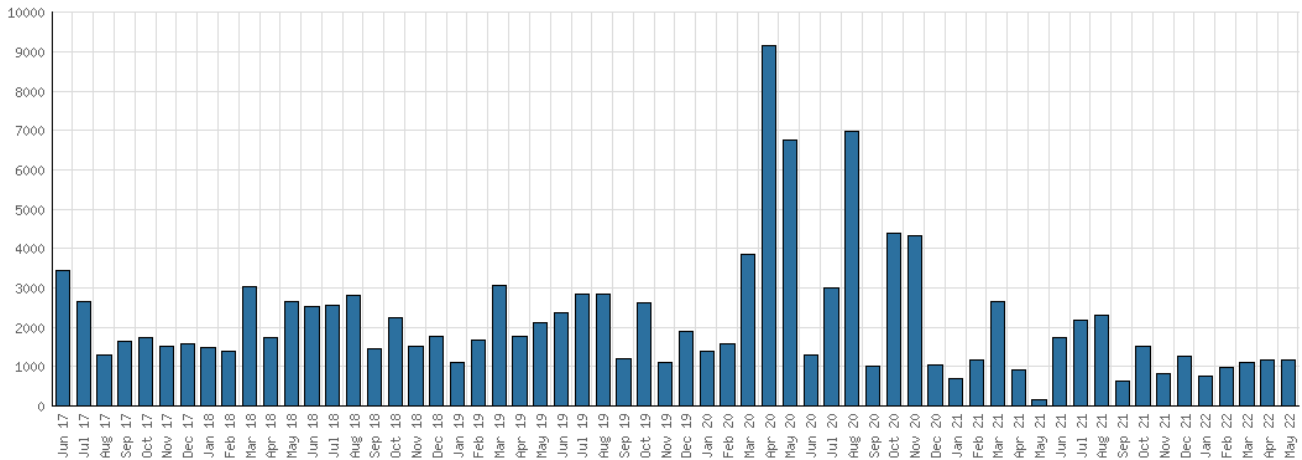
## Selected Graphs

### 5-year Monthly Trends

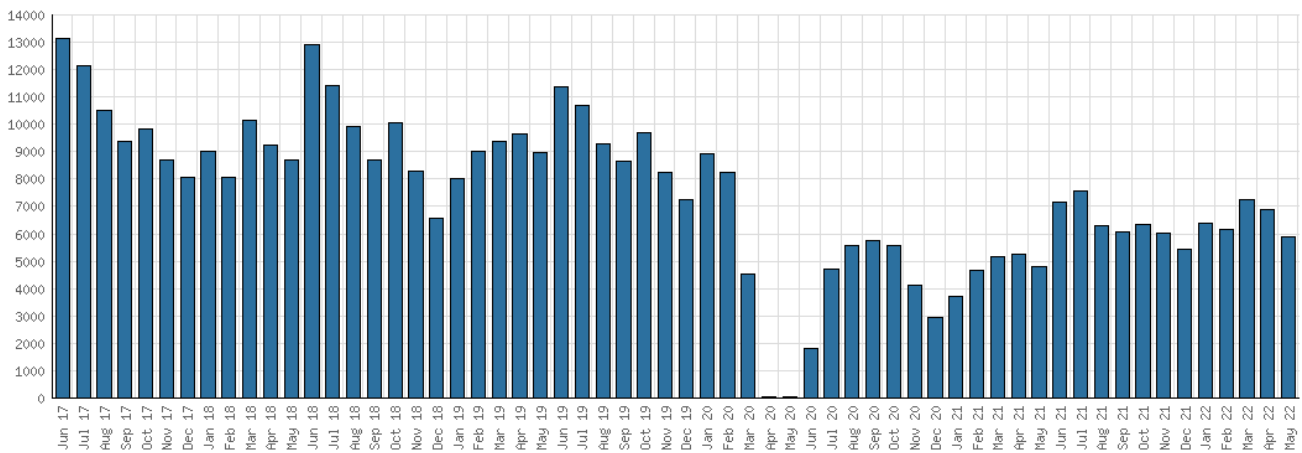
#### District Attendance



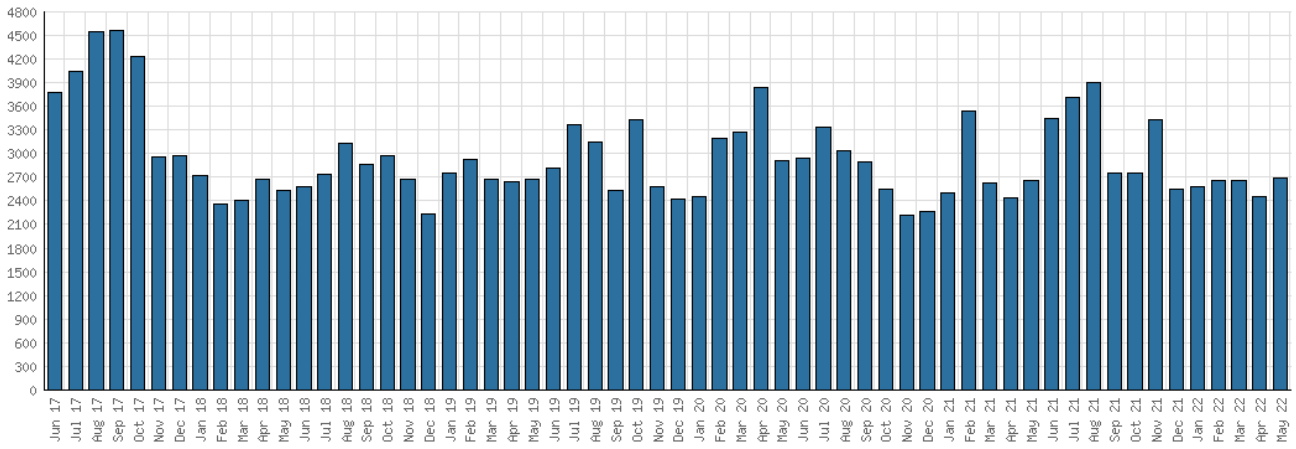
#### District Program Attendance



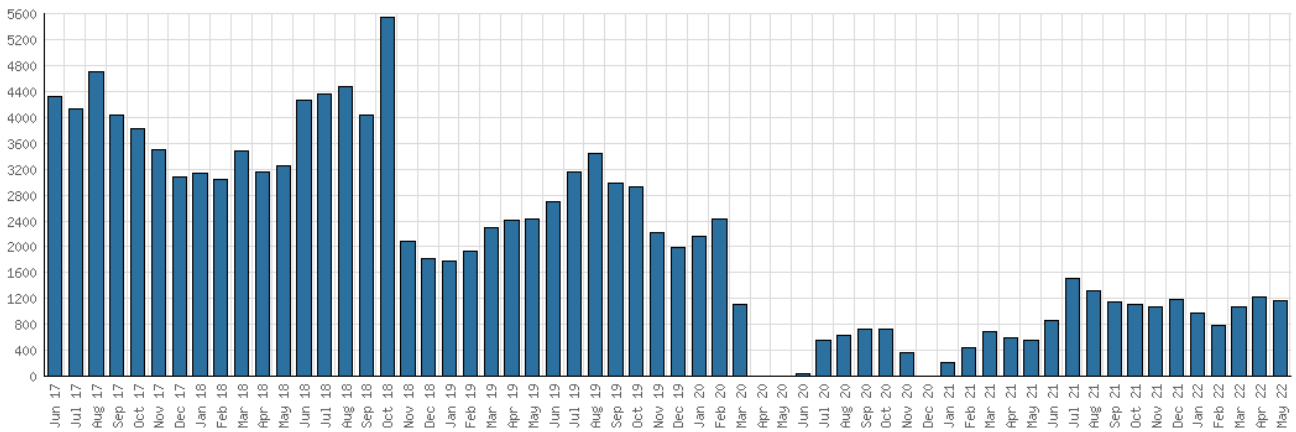
#### District Physical Checkouts



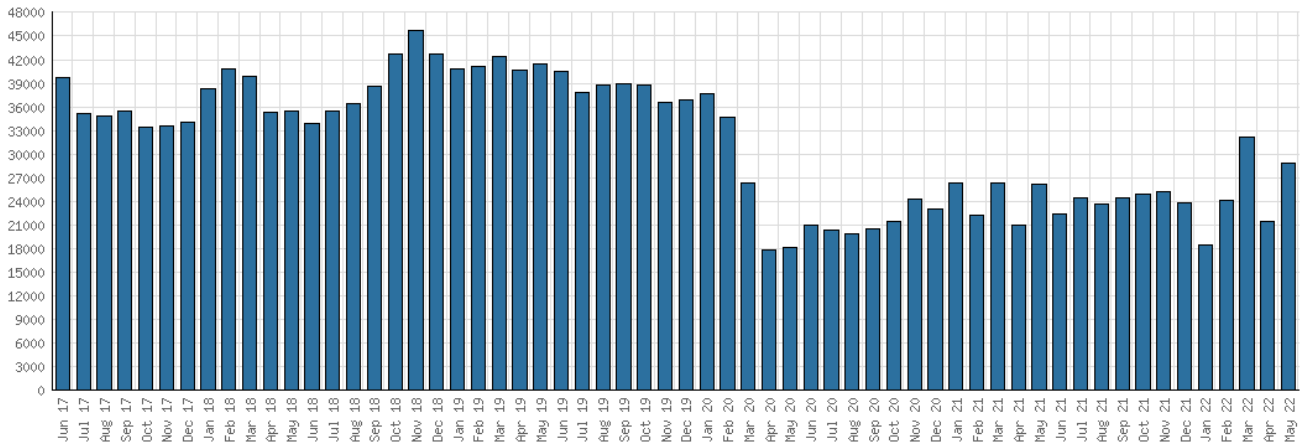
District Digital Usage



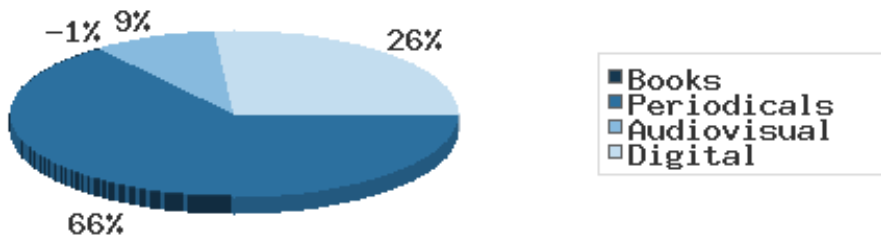
District Use of Library-Provided Computers



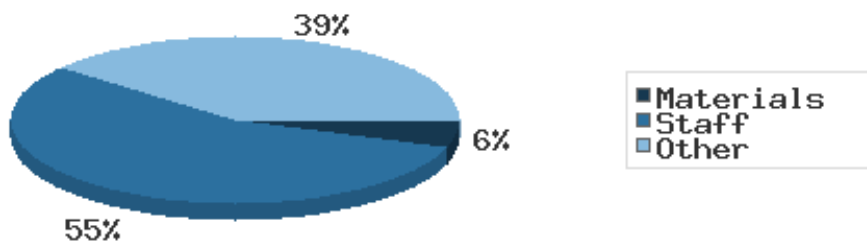
District One-Hour Sessions on Library Wifi



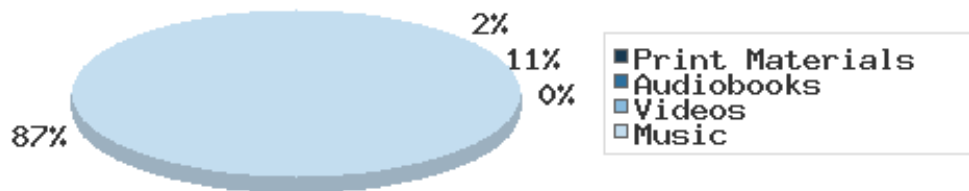
Year-to-Date Materials Expenditures



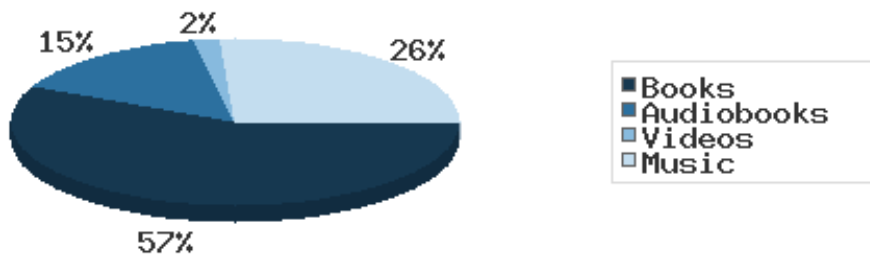
### YTD Expenditures in all Categories



### Physical Collection



### Digital Collection



### YTD Usage Breakdown of Digital Services

